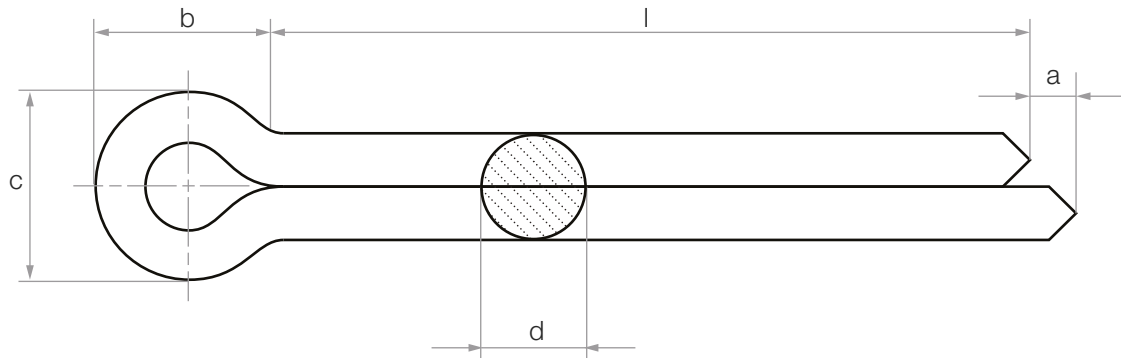


How To Measure a Cotter Pin

Also known as a Split Pin



This data sheet provides an illustrated description of the dimensions of a cotter pin. It contains information on the height and width of the eye, cotter pin length, offset and diameter.



The Cotter Pin has two main measurements, **the diameter**, and **the effective length**. The easiest way to obtain these measurements is by using a pair of Vernier Calipers.

Key:

- c** = Width of the eye
- b** = Height of the eye
- d** = Diameter
- l** = Effective length
- a** = Offset end

Diameter of Cotter Pin

The diameter of a Cotter Pin is measured from a point where both tines are flush together. Refer to 'd' in the diagram below.

Effective Length of Cotter Pin

The effective length of a Cotter Pin is measured on the shortest tine. To obtain this measurement, measure from the tip of the shortest tine, to where it begins to taper up into the head. Refer to 'l' on the diagram above.

ⓘ The data provided in this document is for general guidance only and should not be solely relied upon when working to stringent specifications. We recommend consulting with qualified experts regarding any technical queries. This information may change without written notice.